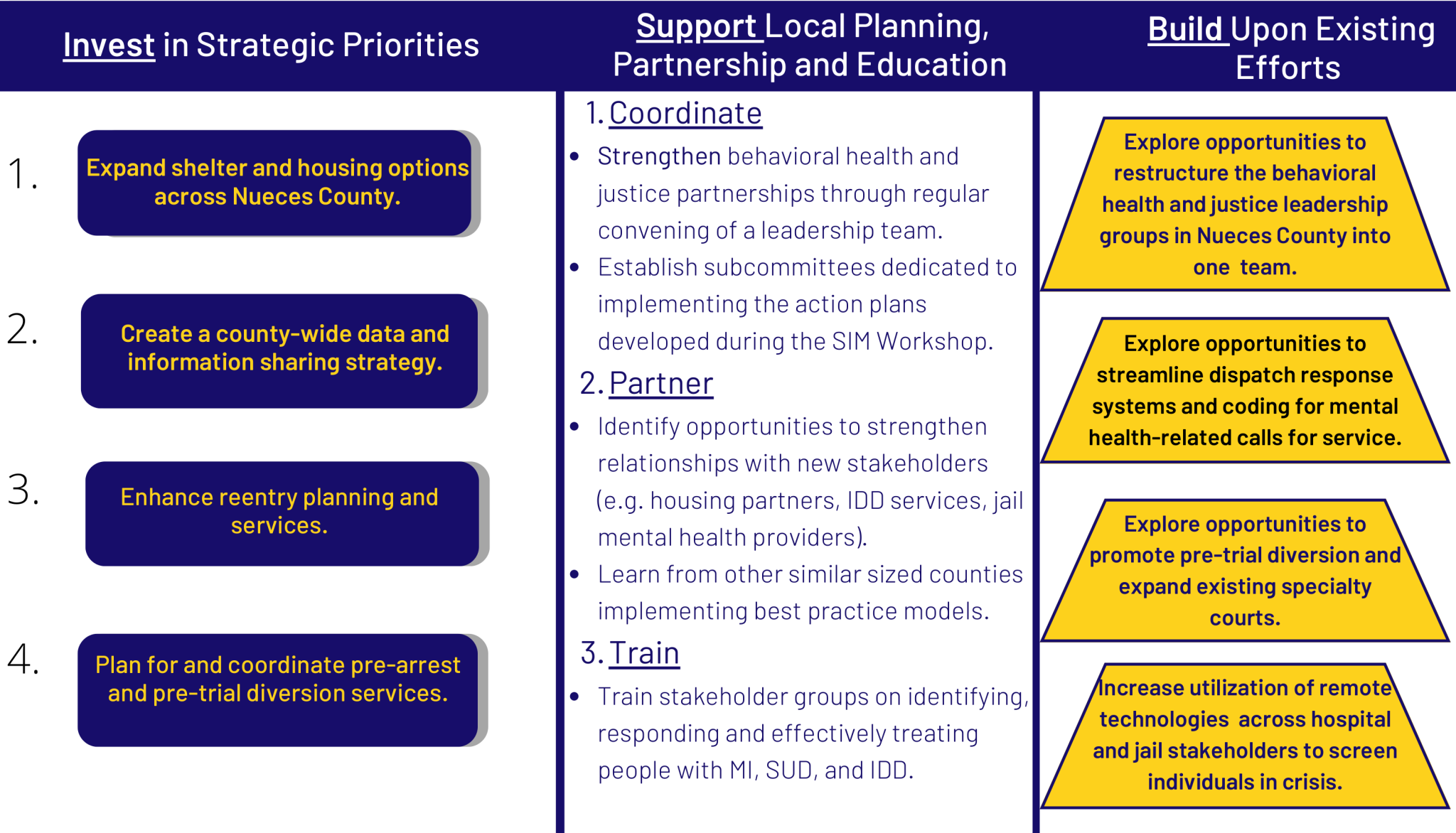


Nueces County Roadmap

Community stakeholders can consider the following next steps to reduce justice involvement for people with mental illness (MI), substance use disorders (SUD), and/or intellectual and developmental disabilities (IDD). For more information and resources review the Nueces County SIM Report.



See the Strategic Action Plans on pg 14 of the Nueces County SIM Report for additional details.

Nueces County Gaps, Opportunities and Best Practices

Intercepts 0&1

Community Services, Crisis Services & Law Enforcement

Selected Gaps:

- Triage mental health calls for service
- Timely medical clearance
- Substance Used Disorder (SUD) treatment options for individuals in crisis
- Screening and coding for mental health (MH) crisis at 911 dispatch
- Treatment alternatives to inpatient hospitalization

Opportunities:

- Expand mental health training options for 911 dispatchers and law enforcement
- Expand field-based medical clearance options
- Expand pre-arrest diversion options through the development of a diversion center and sobering unit.
- Develop a uniform data collection and reporting strategy across stakeholders

Intercepts 2&3

Initial Detention, Jails, & Courts

Selected Gaps:

- Substance use treatment services in Nueces County jail
- Long wait times for individuals found incompetent to stand trial in Nueces County Jail
- Limited availability and capacity of the Nueces jail navigator
- Pretrial diversion programs

Opportunities:

- Consider telehealth opportunities to expand SUD and MH treatment in jail
- Educate courts on post-booking diversion options
- Explore use of court ordered medications
- Use a validated risk assessment to determine treatment needs, bond and pretrial supervision
- Expand pre-trial programs and specialty courts

Intercepts 4&5

Reentry & Community Corrections

Selected Gaps:

- Case management and reentry planning capacity in jail prior to a release
- Jail staff knowledge of available community-based BH services
- Transportation options for people exiting jail
- Limited affordable housing for people with criminal records
- Need for specialized probation and parole caseloads exceeds demand

Opportunities:

- Create a release checklist to anticipate what needs people will have when their notice of release is posted
- Provide probation officers and jail staff with additional MH training
- Utilize peers to support community reentry programs
- Expand specialized probation caseloads
- Expand transitional housing options

Best Practices at Each Intercept

Intercept 0 & 1

MH training for LE and 911 dispatch

Police coding of MH Calls

Police Referrals to Treatment

MH and SUD diversion centers

Intercept 2 & 3

Consistent screening for MI, SUD and IDD

Pretrial Supervision and Diversion Programs

Active forensic waitlist monitoring

Jail-based SUD and MH services

Intercept 4 & 5

Robust reentry planning (psych medications, benefits coordination, peer-support)

Specialized MI, IDD and SUD caseloads

Jail in-Reach transition planning