



TEXAS
Health and Human
Services

Resources to Support County Behavioral Health and Justice Strategic Planning

Texas Health and Human Services Commission, Office of Forensic Coordination

Texas Veterans Commission, Veterans Mental Health Department

April 4, 2024



TEXAS
Health and Human
Services

Agenda

1. Welcome
2. Overview of the Sequential Intercept Model (SIM)
3. Using the SIM to Support Veterans
4. New Resources and Funding Opportunities
5. Lessons Learned: Planning a SIM Workshop and Implementing Action Plans
6. Q&A

Office of Forensic Coordination

Improve forensic service coordination and prevent and reduce justice involvement for people with mental illness (MI) and substance use disorders (SUD) **through statewide and cross-agency initiatives** that improve coordination and collaboration among state and local leaders.



State and Local Planning



Policy and Staffing for the Joint Committee on Access to Forensic Services



Training and Technical Assistance



Research and Data Analysis



Engagement, Education, and Coordination

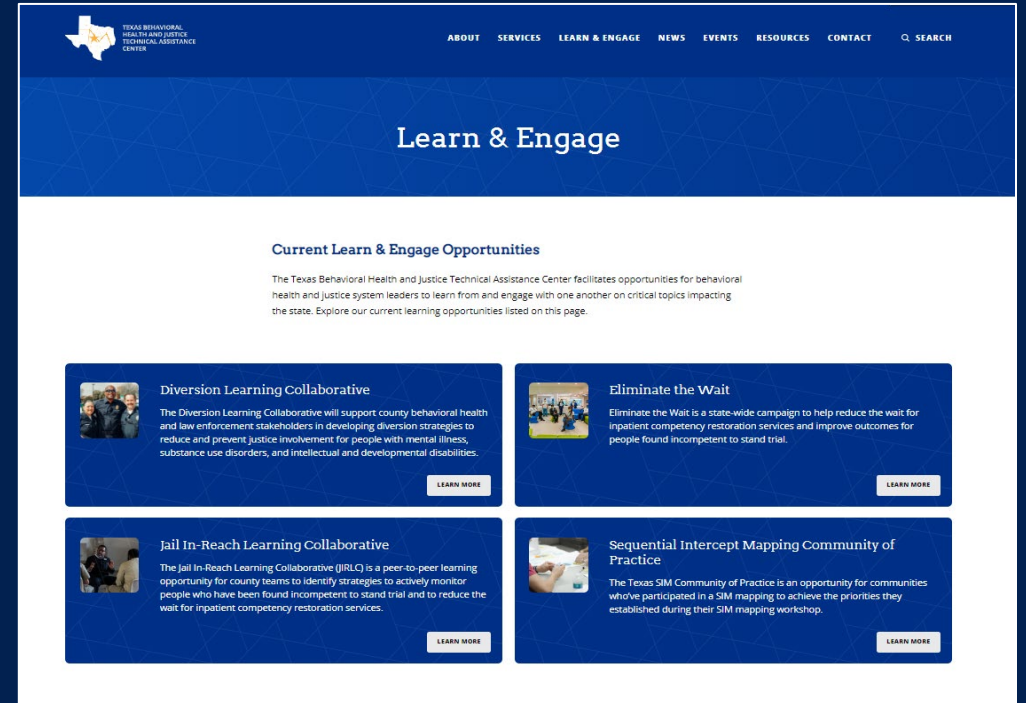


TEXAS
Health and Human
Services

Texas Behavioral Health and Justice Technical Assistance Center



TEXAS
Health and Human
Services



www.TXBHJustice.org



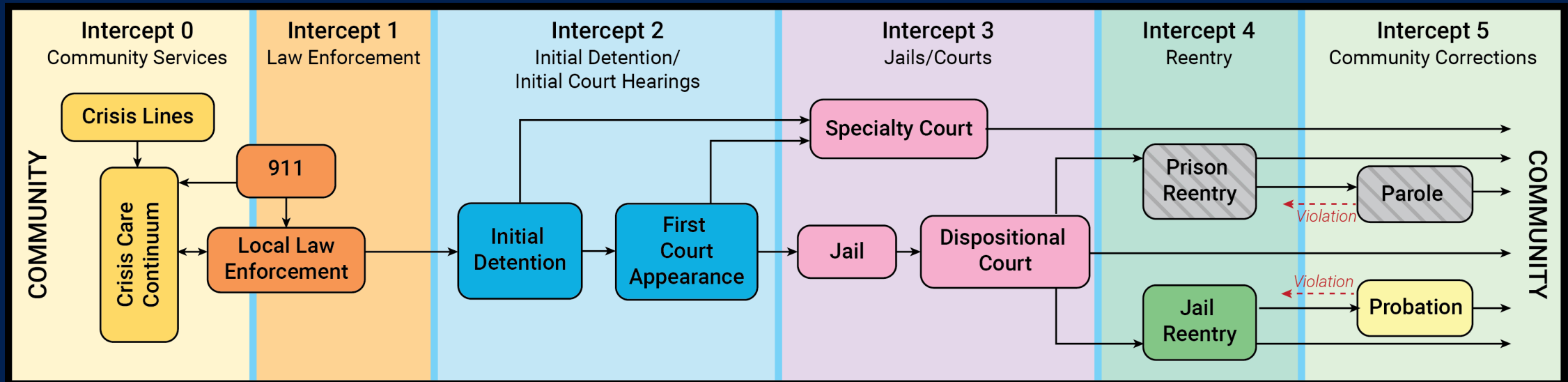
Overview of the Sequential Intercept Model (SIM)

Catie Bialick, Director of Behavioral Health and Justice Initiatives, Office of Forensic Coordination, Texas Health and Human Services Commission (HHSC)

The Sequential Intercept Model



TEXAS
Health and Human
Services



© 2016 Policy Research Associates, Inc.

SIM Mapping Workshops



TEXAS
Health and Human
Services

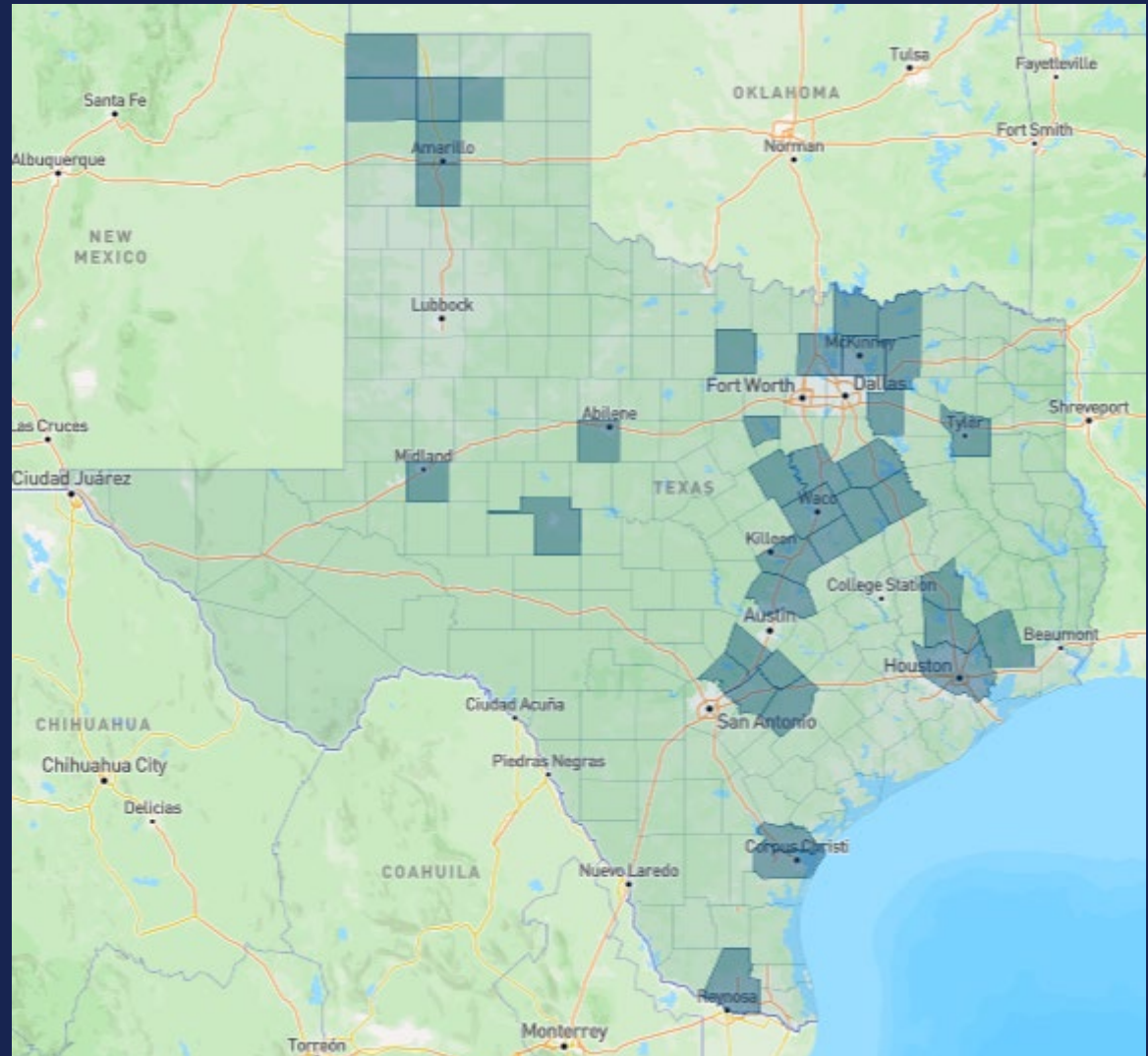


SIM Mapping Workshops by the Numbers



TEXAS
Health and Human
Services

- 19** SIM Mapping Workshops Completed
- 16** Behavioral Health Leadership Teams created
- 22** New programs and initiatives
- 28** Counties engaged



Adult Trends



TEXAS
Health and Human
Services

Top Adult SIM Priorities Selected

1. Expand pre-arrest diversion options (including planning for a diversion or sobering center)
2. Develop a community housing plan.
3. Increase awareness, education and training for behavioral health and justice stakeholders.
4. Establish a county Behavioral Health Leadership Team.

~800

Local
Participants

~450

Organizations
and Agencies
Represented

23

Counties
Engaged

State-Local Collaboration to Modify the SIM for Youth



TEXAS
Health and Human
Services

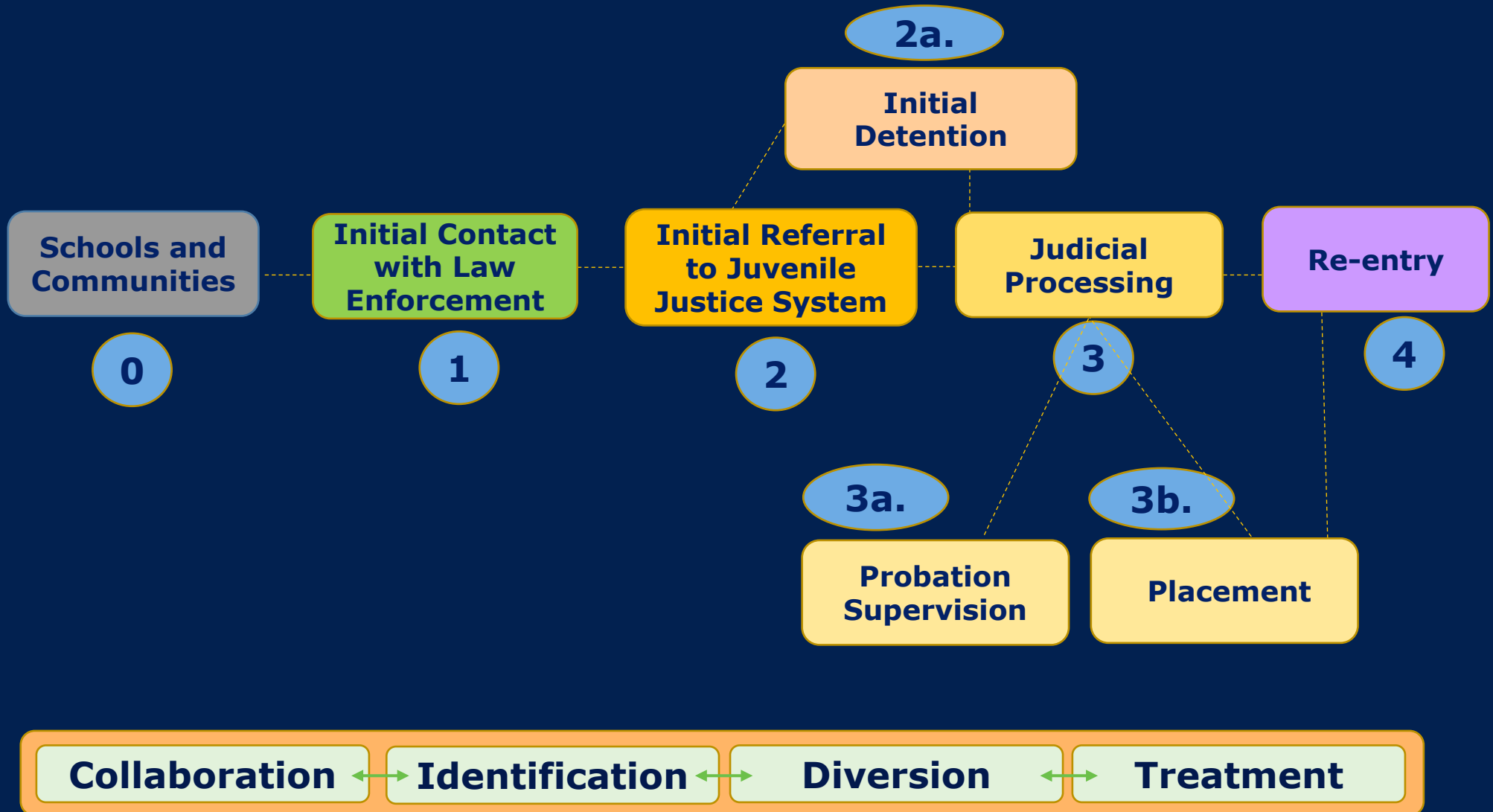
Communities want to understand how youth with Mental Illness (MI), Substance Use Disorder (SUD), and Intellectual and Developmental Disabilities (IDD) are connected to behavioral health and crisis services in the community, as well as how they encounter and move through the juvenile justice system.



The Texas Youth SIM Model



TEXAS
Health and Human
Services



Youth Trends



TEXAS
Health and Human
Services

Youth SIM Priorities Selected

1. Enhance early intervention and prevention strategies to support families.
2. Enhance law enforcement training for youth.
3. Expand school-based behavioral health supports.
4. Increase information sharing and collaboration across youth stakeholder groups.
5. Expand mentorship and peer services for youth across the SIM.
6. Increase transitional supports at reentry: housing and family supports.

180

Local
Participants

70

Organizations
and Agencies
Represented

5

Counties
Engaged

Interested in Learning More?



TEXAS
Health and Human
Services

Innovation Across Texas' Behavioral He...
Watch later
Texas Behavioral Health and Justice Technical Assistance Center
Innovation Across Texas'
Behavioral Health & the Juvenile
Justice Systems
Watch on YouTube

www.txbhjustice.org



Texas Youth Sequential Intercept Model Mapping Best Practices

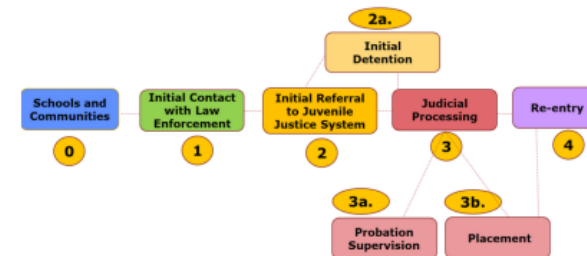
The Texas Youth Sequential Intercept Model (Youth SIM) is a strategic planning tool for communities to identify potential diversion and treatment opportunities at each stage of the juvenile justice process for youth with mental illness (MI), substance use disorders (SUD), and intellectual and developmental disabilities (IDD).

Collaborating closely with state agencies working at the intersection of youth behavioral health and juvenile justice systems, the Texas Health and Human Services Commission Office of Forensic Coordination adapted the Critical Intervention Model developed by the National Center for Youth Opportunity and Justice to create a Texas-specific model to support strategic planning across these systems.

Use this resource as a tool during Youth SIM mapping workshops or as guidance for youth behavioral health and juvenile justice stakeholders to examine what programs and policies exist in their communities.

Texas Youth SIM Map

The goal of the Youth SIM is to show a comprehensive picture of how youth with MI and co-occurring disorders move through the juvenile justice system along five distinct intercept points. These are shown below as intercepts 0-4.





Using the SIM to Support Veterans

**Cynthia Gray, Justice Involved Veteran (JIV)
Program Manager and Military Veteran Peer
Network**

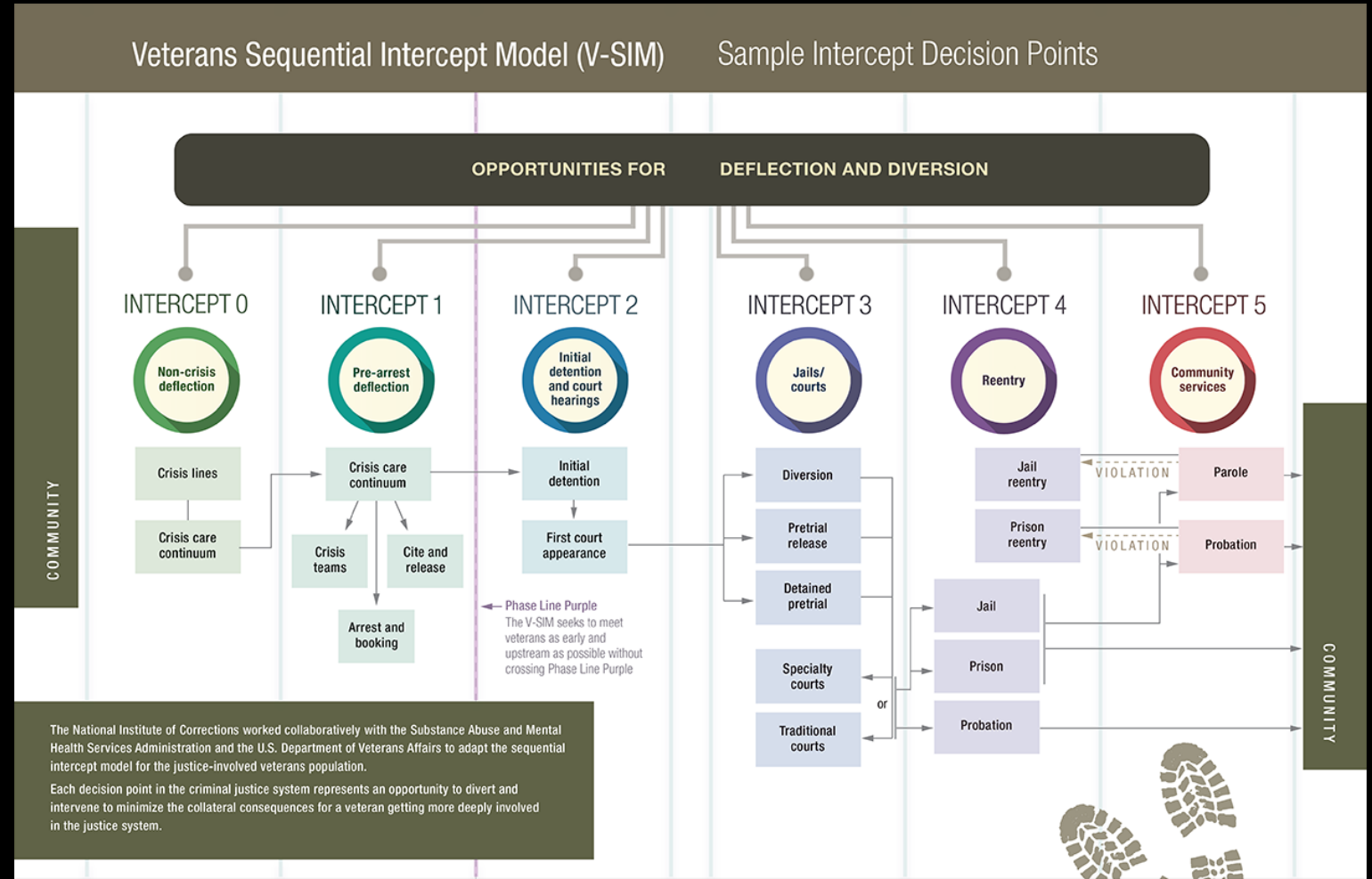
Terri Williams, JIV Program Manager

**Texas Veterans Commission, Veterans
Mental Health Department**

Veterans Sequential Intercept Model (V-SIM)

Veterans Sequential Intercept Model (V-SIM)

Sample Intercept Decision Points



Presenter Bios

Terri Williams, M.A., is a Licensed Professional Counselor and a native Texan. She is a graduate of St. Edwards University where she earned a B.A. in Criminal Justice and a M.A. in Counseling. She has worked in the intersection of criminal justice and mental health for over twenty years as a Mental Health Probation Officer, Residential Probation Officer, Counselor, and Treatment & Counseling Casework Manager. She has experience in establishing and contributing clinical and technical assistance to Specialty and Reentry Courts. Terri is a trainer in Trauma-Informed Care, Sequential Intercept Mapping and Suicide Prevention efforts including AS+K? About Suicide to Save a Life and Counseling on Access to Lethal Means. She is trained in numerous evidence-based treatment modalities and interventions including Cognitive Behavioral Therapy, Dialectical Behavioral Therapy, Motivational Interviewing, Seeking Safety, Aggression Replacement Training, Trauma Affect Regulation, and Offense-Specific Therapy.

Cynthia Gray is a proud Veteran of the U.S. Air Force. Her undergraduate degree is in Gerontological Studies and Dementia Care and she recently earned her M.S in Clinical Mental Health Counseling from Texas A&M University Central Texas. She is a current member of the National Association of Dementia Practitioners as the unique mental health needs of the aging veteran population holds special interest for her. Cynthia values serving the Texas veteran community in tangible ways, and she is a mentor in both the Federal Fort Cavazos Veterans Treatment Court and the Bell County Veterans Treatment Court, as well as a group facilitator for veterans experiencing incarceration at the Hughes and Mountain View Prisons in Gatesville, Texas. She received the Volunteer Service awards in 2020 and 2021 from the Texas Department of Criminal Justice. Not only does Cynthia have law enforcement experience from her time in the Air Force, but she is also a certified trainer in Mental Health First Aid, Counseling on Access to Lethal Means, AS+K? About Suicide to Save a Life, and Military Cultural Competency. She has a passion for providing support and resources to individuals involved within the Texas Criminal Justice System.

Intercept 0: Community Services: Focus on Deflection and Leveraging Community Resources

- Intercept 0 starts in the community(Non-Crisis Deflection)
 - Deflection is a newer field of practice and provides an opportunity to identify veterans and connect them to services prior to arrest or crisis.
 - Relies on the knowledge of available services that the veterans can be enrolled in or admitted to; i.e., community mental health agencies, VA(if eligible), substance use treatment, VCSO's, VFW's, etc.
 - Intercept 0 is broader in scope than the other intercepts and connects with the others.

Intercept 1: Deflection and Pre-Arrest Diversion Finding Veterans Before Crisis

- Intercept 1 is comparable to Intercept 0 in its use of deflection but focuses on pre-arrest deflection(law enforcement only) as opposed to non crisis deflection.
- Ask the question “ Did you serve?”
- This intercept highlights the benefits to training first responders on crisis intervention, mental health symptomology, identifying and dealing with trauma affected veterans, military cultural competency, etc.

Intercept 2: Early Identification of Veteran Status in Detention or Court Settings

- Intercept 2 focuses on initial detention and court hearings where the veteran can be diverted to community-based treatments.
- There are opportunities for triage by jail clinicians or social workers at intake. They may be able to make referrals to mental health or substance use treatment facilities
- One challenge with Intercept 2 is the time element. Because of that, this intercept is most efficient when the local criminal justice personnel has knowledge of and support from community partners such as Peer Service Coordinators, Veteran Justice Outreach specialist, etc. and engages in veteran specific training.

Intercept 3: Opportunities for Clinical Services and More Intensive Supervision

- Intercept 3 involves jail and courts and the programs associated with them.
- Accurate screening and assessment can help identify veterans and determine their eligibility for diversions such as veteran treatment courts or connections to community-based programs while navigating the Court system.
- Judges, prosecutors and defense attorneys as well as jail staff benefit from veteran specific training and knowledge of those programs.

Intercept 4: Preparing for Reentry with Responsive Services

- Intercept 4 focuses on supporting the veteran's reentry back to the community.
- Reentry starts at the early stages of incarceration and continues through release.
- Having knowledge of community supports and making warm handoffs (PSC's, VJO's, Probation and Parole Officers, etc.) helps with continuity of care. Those agencies also benefit from veteran specific trainings as well.

Intercept 5: Identifying and Addressing Veterans Needs through Assessment and Case Planning

- Intercept 5 focuses heavily on community-based supervision with added supports to reduce violations or reoffending.
- This intercept provides opportunities to identify veterans who may not have identified previously and get them enrolled in services.
- One promising approach to reducing recidivism and helping the veteran stick to their reentry plan is the use of veteran peer mentors.


WHAT DOES THAT MEAN FOR YOU?

- The Justice Involved Veteran (JIV) Program is housed within TVC's Veterans Mental Health Department, and its aim is to improve veteran services across the criminal justice continuum.
- The JIV Program Managers serve as a resource to provide technical assistance and training to all Veteran Treatment Courts across Texas, partner with the local and state law enforcement to deliver relevant trainings such as trauma-affected veterans and crisis intervention strategies. The JIV Program Managers also collaborate with the local jail and state prison systems to better ensure that incarcerated veterans have access to veteran-specific services and programming.
- The Veterans Mental Health Department (VMHD) conducts free suicide and mental health trainings such as Mental Health First Aid, CALM and AS+K.
- We also collaborate with Military Veteran Peer Network's Peer Service Coordinators to facilitate warm handoffs for justice involved veterans currently incarcerated in the prison system and the local jails and to support justice involved veterans and their families in their communities.

Terri Williams, M.A., LPC
Justice Involved Veteran Program Manager
Veterans Mental Health Department
terri.williams@tvc.texas.gov
Cell: 737-237-4080
<https://veteransmentalhealth.texas.gov/>

Cynthia Gray, M.S., LPC-Associate
Justice Involved Veteran & Military Veteran Peer
Network Program Manager
Veterans Mental Health Department
cynthia.gray@tvc.texas.gov
Cell: 512-815-7906
<https://veteransmentalhealth.texas.gov/>





New Resources to Support Strategic Planning and Implementation of Action Plans

**Emily Dirksmeyer, Technical Assistance Coordinator,
Office of Forensic Coordination, HHSC**

SIM Implementation Grants



TEXAS
Health and Human
Services

Purpose: To support communities in planning and/or implementing collaborative programs for people with serious mental illnesses (SMI) or co-occurring SMI and substance use disorders to reduce and prevent criminal and juvenile justice systems involvement.

Eligibility: Local Mental Health Authority, Local Behavioral Health Authority or other Governmental Entity

Funding amount: \$1,500,000 allocated across six one-time grants of \$250,000 each.



Applications for Fall and Winter SIM Workshops



TEXAS
Health and Human
Services



TEXAS BEHAVIORAL
HEALTH AND JUSTICE
TECHNICAL ASSISTANCE
CENTER

Application for Sequential Intercept Model Mapping Workshops

Spring 2024

Who Can Apply:

- Local Behavioral Health and Justice System Stakeholders

Key Requirements:

- Complete application in its entirety
- Demonstrate community buy in
- Identify a planning committee

Key Dates:

- Applications Open: April 4, 2024
- **Applications Close: May 17, 2024**
- Jurisdictions Notified: June 7, 2024
- Confirm Date for Mappings: June 28, 2024
- Workshops: September 2024 – February 2025

Planning Resources, Training and Technical Assistance



TEXAS
Health and Human
Services

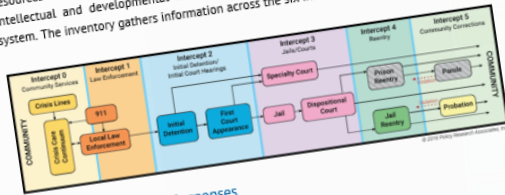
Planning for Dive A Texas Diversion Center



Texas Behavioral Health and
Justice Technical Assistance Center
October 2023

Texas Sequential Intercept Model Resource Inventory

The purpose of the SIM Resource Inventory is to gain a high-level understanding of the resources available to serve adults with mental illness, substance use disorders, and intellectual and developmental disabilities in the community and the juvenile justice system. The inventory gathers information across the six intercepts depicted below.



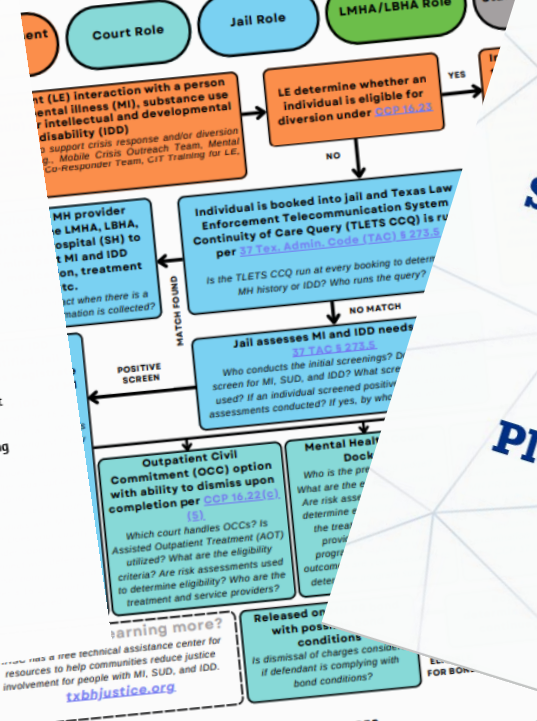
Crisis Lines and Mobile Responses

Hotlines

A hotline can link a person in mental health crisis to immediate or short-wait crisis care services. Hotline operators can also resolve crisis calls through phone counseling and referrals to treatment or resources. A hotline may operate via an audio telephone call, text messaging, or another technology. Hotlines operate 24/7/365 crisis hotlines serving your community.

- Instruction: List the organizations which operate 24/7/365 crisis hotlines serving your community.
- Hotline 1: Click or tap here to enter text.
- Phone number: Click or tap here to enter text.
- Hotline 2: Click or tap here to enter text.
- Phone number: Click or tap here to enter text.
- Hotline 3: Click or tap here to enter text.
- Phone number: Click or tap here to enter text.
- Hotline 4: Click or tap here to enter text.
- Phone number: Click or tap here to enter text.

Restoration & Competency Work



COMPETENCY RESTORATION SERVICES
Issue of competency can be raised at any point after charges have been filed. Steps below may apply to individuals who the court has determined are incompetent and likely to restore to competency in the foreseeable future (within timeframe allowed by Subchapter D).

Defendant is committed to appropriate facility for inpatient, jail-based, or outpatient

Sequential Intercept Model Mapping Workshop Planning Toolkit

Texas Competency Restoration Guide

September 2023



**Lessons Learned:
Planning a SIM Workshop and
Implementing Action Plans**

Planning Tips (1 of 3)

Establish a multi-disciplinary planning committee representing key leaders across local systems.

Planning committee members help:

- Establish workshop goals
- Develop the invite list
- Recruit participants
- Mobilize their agencies to support information gathering



TEXAS
Health and Human
Services

Planning Tips (2 of 3)

Clarify goals and expectations for the workshop.

Workshop Type	Potential Goals	Example Counties
Adult SIM	Bring together stakeholders from across behavioral health and justice systems, map resources, identify gaps and opportunities, develop priorities and plans.	• <u>Nueces County SIM</u> • <u>Taylor County SIM</u>
Youth SIM	Bring together stakeholders from across behavioral health, juvenile justice and other youth serving systems to map resources, identify gaps and opportunities, develop plans and priorities.	• <u>Comal County Youth SIM</u>
Program Specific SIM	Bring together stakeholders to develop plans for a new diversion center.	• <u>Bell County SIM : Diversion Centers</u>
Population Specific SIM	Bring together stakeholders from across behavioral health and justice system to reduce and prevent justice involvement for veterans in the community.	• <u>Veterans SIM</u>
Intercept Specific SIM or SIM Re-Mapping	Bring together behavioral health and law enforcement stakeholders to reflect on progress made since initial mapping, assess new programs and services at intercepts 0 and 1 and identify ongoing opportunities to improve communication and collaboration.	• <u>Williamson County SIM: Intercept 0 & 1</u>



Planning Tips (3 of 3)

Make the most of this opportunity to inventory resources and collect data across your local system.



TEXAS
Health and Human
Services

TEXAS BEHAVIORAL HEALTH AND JUSTICE TECHNICAL ASSISTANCE CENTER

Texas Sequential Intercept Model

Resource Inventory

The purpose of the SIM Resource Inventory is to gain a high-level understanding of the resources available to serve adults with mental illness, substance use disorders, and intellectual and developmental disabilities in the community and the juvenile justice system. The inventory gathers information across the six intercepts depicted below.

Crisis Lines and Mobile Responses

Hotlines

A hotline can link a person in mental health crisis to immediate or short-wait crisis care services. Hotline operators can also resolve crisis calls through phone counseling and referrals to treatment or resources. A hotline may operate via an audio telephone call, text messaging, or another technology. Hotlines operate 24/7/365 to provide crisis services.

Instruction: List the organizations which operate 24/7/365 crisis hotlines serving your community.

Hotline 1: Click or tap here to enter text.

- Phone number: Click or tap here to enter text.

Hotline 2: Click or tap here to enter text.

- Phone number: Click or tap here to enter text.

Hotline 3: Click or tap here to enter text.

- Phone number: Click or tap here to enter text.

Hotline 4: Click or tap here to enter text.

- Phone number: Click or tap here to enter text.

TEXAS BEHAVIORAL HEALTH AND JUSTICE TECHNICAL ASSISTANCE CENTER

Sequential Intercept Model Mapping Working: Community Impact Measures

Community:	Date:				
Measure	Intercept	Category	Baseline-6 months of data (as recent as possible)	Data Date Range (e.g. June 2022-Dec.)	Data Source (e.g. County Sheriff's)
Mental health crisis line calls, count (#)	Intercept 0	Crisis Lines			
Emergency department admissions for psychiatric reasons, count (#)	Intercept 0	Emergency Department			
Psychiatric hospital admissions (#)	Intercept 0	Hospitals			
Mobile crisis outreach team episodes, count (#)	Intercept 0	Mobile Crisis			
Mobile crisis outreach calls responded to in the community (%)	Intercept 0	Mobile Crisis			
Mobile crisis outreach calls resolved in the field (%)	Intercept 0	Mobile Crisis			
Mobile crisis outreach team calls, repeat calls (% of calls)	Intercept 0	Mobile Crisis			
Crisis center admissions, count (e.g. respite center, crisis stabilization unit) (#)	Intercept 0	Crisis Center			
Designated mental health officers (e.g. Mental Health Deputies, CIT Officer) (#)	Intercept 1	Law Enforcement			
Mental health crisis calls handled by law enforcement, count (#)	Intercept 1	Law Enforcement			
Law enforcement transport to crisis facilities (emergency department, crisis centers, psychiatric hospital) (#)	Intercept 1	Law Enforcement			
Mental health crisis calls handled by specialized MH law enforcement officers, percent (%)	Intercept 1	Law Enforcement			
Jail bookings, count (#)	Intercept 2	Jail (Pretrial)			
number of jail bookings for low-level misdemeanors	Intercept 2	Jail (Pretrial)			
Jail mental health screenings, percent screening positive (%)	Intercept 2	Jail (Pretrial)			
Jail substance use screenings, count (#)	Intercept 2	Jail (Pretrial)			
Jail substance use screenings, percent screening positive (%)	Intercept 2	Jail (Pretrial)			
Pretrial release rate of all arrestees, percent released (%)	Intercept 2	Pretrial Release			
average cost per day to house someone in jail	Intercept 2	Jail (Pretrial)			
average cost per day to house people with mental health issues in jail	Intercept 2	Jail (Pretrial)			
average cost per day to house someone with psychotropic medication	Intercept 2	Jail (Pretrial)			
Caseload rate of the court system, misdemeanor v. felony cases (%)	Intercept 3	Case Processing			
Misdemeanor and felony cases where the defendant is evaluated for adjudicative competence, percent (%)	Intercept 3	Case Processing			
Jail sentenced population, average length of stay (days)	Intercept 3	Incarceration			
Jail sentenced population with mental disorders, average length of stay (days)	Intercept 3	Incarceration			
Individuals with mental or substance use disorders receiving reentry coordination prior to jail release, percent (%)	Intercept 4	Reentry			
Individuals with mental or substance use disorders receiving benefit coordination prior to jail release, percent (%)	Intercept 4	Reentry			
Individuals with mental disorders receiving a short-term psychotropic medication fill or a prescription, percent (%)	Intercept 4	Reentry			
Probationers with mental disorders on a specialized mental health caseload, percent of probationers (%)	Intercept 5	Community Corrections			
Probation revocation rate of all probationers, percent (%)	Intercept 5	Community Corrections			
Probation revocation rate of probationers with mental disorders, percent (%)	Intercept 5	Community Corrections			

Tips for Implementing Action Plans (1 of 3)

Establish a behavioral health leadership team.

Steps to Establishing a Leadership Team

- ✓ Identify the right partners
- ✓ Learn from other county leadership teams
- ✓ Clearly define scope and authority of the leadership team
- ✓ Establish regular meetings

County Spotlights

- [Hays County Behavioral Advisory Team](#)
- [Kaufman County Behavioral Health Leadership Board](#)
- [Smith County Behavioral Health Leadership Team](#)



TEXAS
Health and Human
Services

Tips for Implementing Action Plans (2 of 3)

Think creatively about funding and sustainability.



TEXAS
Health and Human
Services



Tips and Tricks for Applying for Federal...

Watch later

Tips & Tricks for Applying for Federal Funding

Watch on YouTube

TEXAS BEHAVIORAL HEALTH AND JUSTICE TECHNICAL ASSISTANCE CENTER

Bureau of Justice Assistance Grant Funding 101

This guide was developed by the Health and Human Services Commission's Office of Forensic Coordination to support Texas communities applying for discretionary criminal justice and behavioral health grant programs administered by the Bureau of Justice Assistance (BJA). It was adapted from the Office of Justice Programs (OJP) Grants 101 and Grant Application Resource Guide, as well as public examples of previously successful applications. When applying for a grant, always reference the full requirements of the opportunity as components may change over time.

POTENTIAL GRANT OPPORTUNITIES

Based on past funding opportunities, relevant grant programs that may be available in 2024 include the [Comprehensive Opioid, Stimulant, and Substance Use Program \(COSSUP\)](#), [Justice and Mental Health Collaboration Program \(JMHP\)](#), and [Connect and Protect: Law Enforcement Behavioral Health Response Program](#). Other grant programs may be available, and this guide can also support you in developing applications for those. It's recommended to subscribe to the [BJA email listserve](#) to stay informed of grant funding opportunities.

KEY INSIGHTS

- ✓ **Start early!** To apply, you must have a valid registration in multiple systems. Registration and renewal can take up to 10 business days to complete. Use the [U.S. Department of Justice \(DOJ\) Application Submission Checklist](#) to register.
- ✓ Follow the application exactly and make sure you respond to every element specified in the solicitation. Successful grant applications follow the solicitation instructions precisely.
- ✓ Attend the Funding Webinar for the grant program you would like to apply for. Ask questions!
- ✓ Watch the BJA Grant Application Education Series available under "Previously Held Webinars" on the [BJA Funding Webinar page](#).
- ✓ Use the OJP Grants 101 and Grant Application Resources. Resources to support writing your BJA application are on the following OJP pages:
 - [Overview of OJP Grants and Funding](#)
 - [BJA PowerPoint: The Federal Funding Process: The First Steps to Applying, How to Prepare Now, & Other Considerations \(PDF\)](#)

Tips for Implementing Action Plans (3 of 3)



Leverage state and national resources for technical assistance and support.





TEXAS
Health and Human
Services

Questions

www.TXBHJustice.org



TEXAS
Health and Human
Services

Thank you!

www.TXBHJustice.org